

WARNING!

- This toy is not intended for children under 3 years old.
- Keep this instruction manual. It contains important information.

C.A.R.E. - Catch and Release Entomology

- Use the "Catch and Release" system. Observe insects in the capture bottle; do not touch them. When finished, open the bottle and let them go.
- Insects are fragile! Do not touch any of the insects as you may harm them.
- Do not collect bugs that may get frightened and bite or sting you.
- Only collect insects that you recognize and know are harmless.
- If you are unsure whether the insect is harmless, do not collect it or ask your parent or guardian first.

Battery Disposal

- Do not dispose of the battery in your regular household waste.
- Contact your local waste management officials for information on environmentally sound disposal of rechargeable batteries.
- If a battery leak develops, avoid contact with leaking fluid. Place the damaged battery in a plastic bag for proper disposal.
- If fluid comes into contact with skin or eyes, wash with cool water for at least 15 minutes.

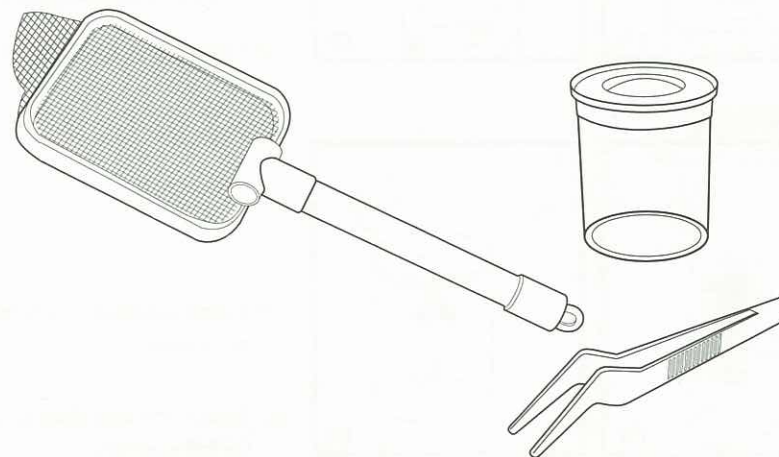
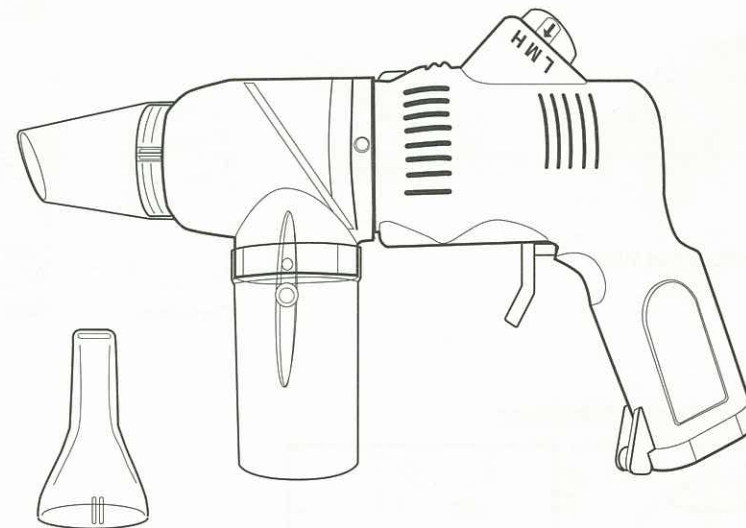
Battery Safety Guidelines

- To prevent battery leakage, be sure to insert batteries correctly.
- Batteries should be replaced by an adult.
- Never dispose of batteries in fire as this may cause them to explode.
- Do not mix old and new batteries (replace all batteries at the same time).
- Do not mix alkaline, standard (carbon-zinc), or rechargeable (nickel-cadmium) batteries (or equivalent). Only use batteries of the same or equivalent type, as recommended.
- Nonrechargeable batteries are not to be recharged.
- Always remove exhausted or dead batteries from product. Remove batteries from product when it will not be used for a long time. Otherwise, the batteries may leak and cause damage.
- Do not short-circuit supply terminals.
- Make sure battery compartment is secure.
- Do not immerse battery-operated toys. Wipe clean only.

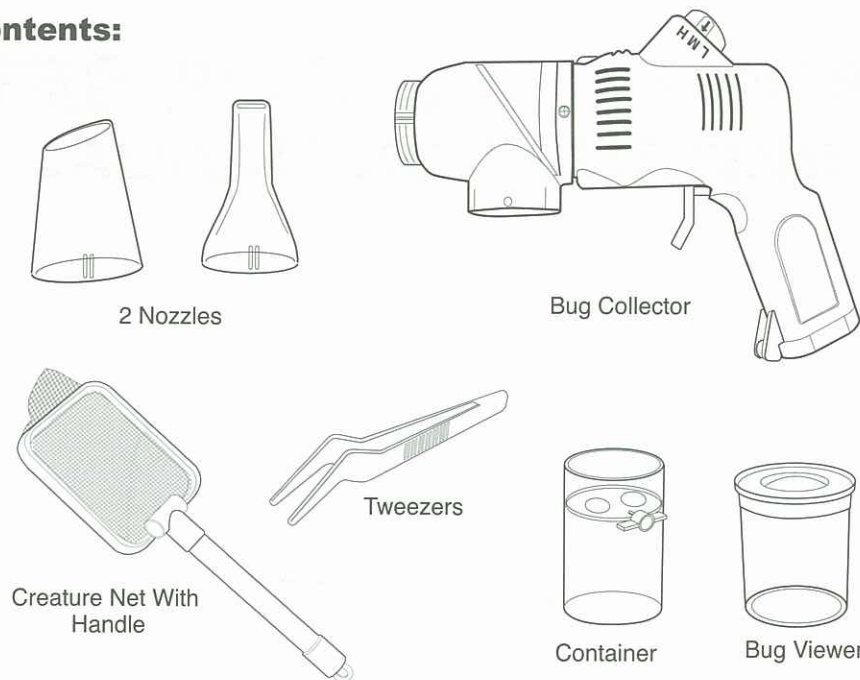


P38-BL052-81001000

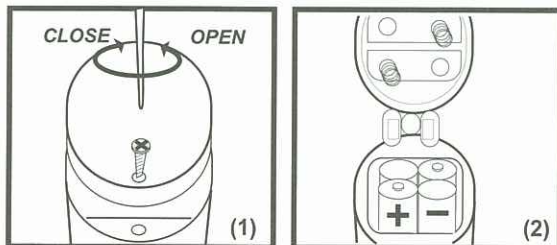
BUG COLLECTOR SET INSTRUCTION MANUAL



Contents:

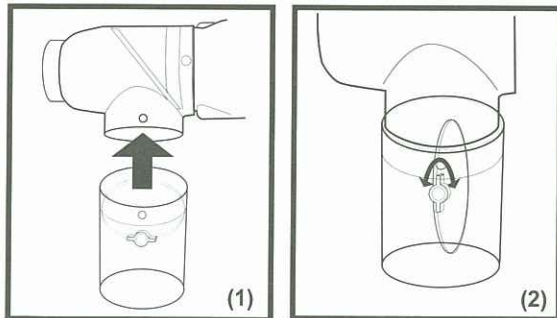


Battery Installation:

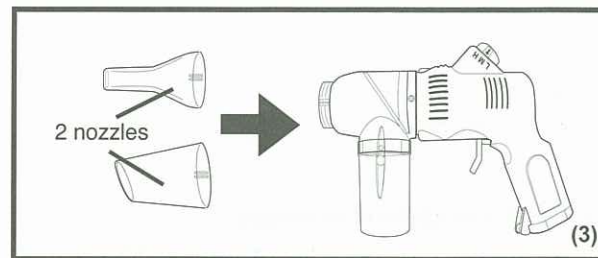


- (1) Open or close the cover with a Phillips head screwdriver.
- (2) Insert four 4 AA (LR6) 1.5V batteries.

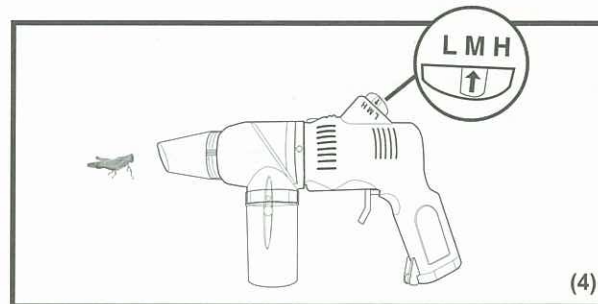
Operation:



- (1) Install a collection container as shown.
- (2) Rotate the trap door to the **OPEN** position.

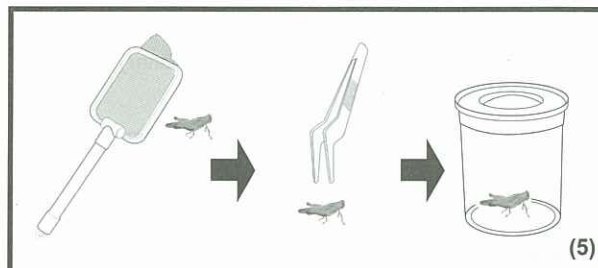


(3) Select and install the nozzle.

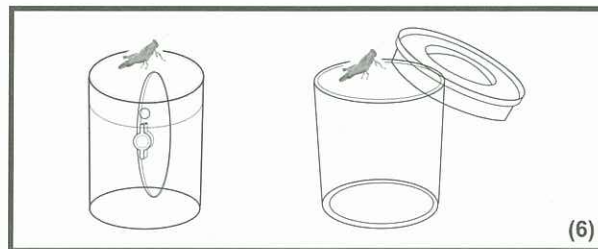


(4) Place the nozzle next to the bug and activate the vacuum by pressing the trigger. You can adjust the power by turning the power knob on the top of the Bug Collector. It is recommended to start with the low "L" power to gently pull the bug into the container. You may adjust to a higher power if you are catching a bigger bug.

(5) Or you can put the bug into the bug viewer by using the tweezers for viewing.



(6) To release the insect, open the trap door and tilt the container as shown.



To clean the Bug Collector, use a damp cloth. Avoid getting the collector wet. If this happens, dry off the toy as soon as possible.