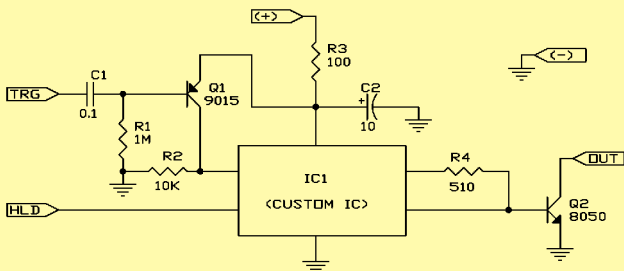
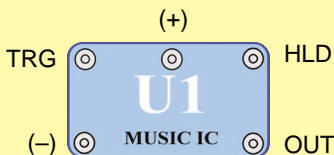


Music IC

The **music IC** module contains sound-generation ICs and supporting components. It can play several musical tunes that are recorded in it. Its actual schematic is complex and looks like this:



Its Snap Circuits connections are like this:



Music IC:

(+) - power from batteries

HLD - hold control input

(-) - power return to batteries

TRG - trigger control input

OUT - output connection

Music for ~20 sec on power-up, then hold HLD to (+) power or touch TRG to (+) power to resume music.

This module has two different control inputs. The OUT connection pulls current into the module (not out of it), usually from a speaker. This current is adjusted to make the music. Snap Circuits projects 15 and 16 show how to connect this part and what it can do.