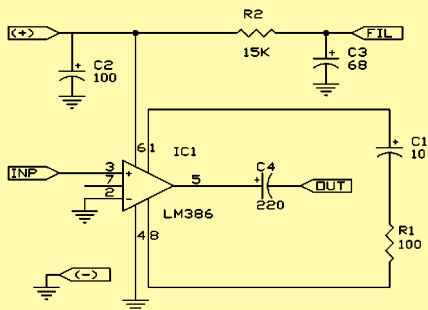


Power Amplifier IC

The **power amplifier IC** module (not included in model SC-100) contains an LM386 audio amplifier IC and supporting components. Its actual schematic looks like this:



Its Snap Circuits connections are like this:



Power Amplifier IC:

(+) - power from batteries

(-) - power return to batteries

FIL - filtered power from batteries

INP - input connection

OUT - output connection

This module amplifies a signal from its input. The OUT connection will usually be directly to a speaker. Amplifiers like this let a small amount of electricity control a much larger amount, such as using a tiny signal from a radio antenna to control a speaker playing music. Snap Circuits projects 242 and 293 show how to connect this part and what it can do.